



# Banner

## CHARGER

### **The HF BASIC – Banner's UNIVERSAL CHARGER**

The Banner HF BASIC charger is a proven device for both industrial and leisure purposes, as evidenced by its great success in the commercial cleaning and golf segments. Indeed, leading manufacturers of cleaning machines and golf vehicles are already using the Banner HF BASIC charger.

**Applications:** cleaning machines, wheelchairs, golf carts, e-scooters, vehicles for handicapped, etc.

#### **PRODUCT HIGHLIGHTS**

- HF technology
- Charging process fully controlled by microprocessor
- Energy efficiency (> 90 % device efficiency level)
- Flexible characteristics for wet, GEL and AGM batteries
- The equalisation of network voltage fluctuations
- Protection against polarity inversions and short circuits
- An LED display
- Many more besides ...





# Banner

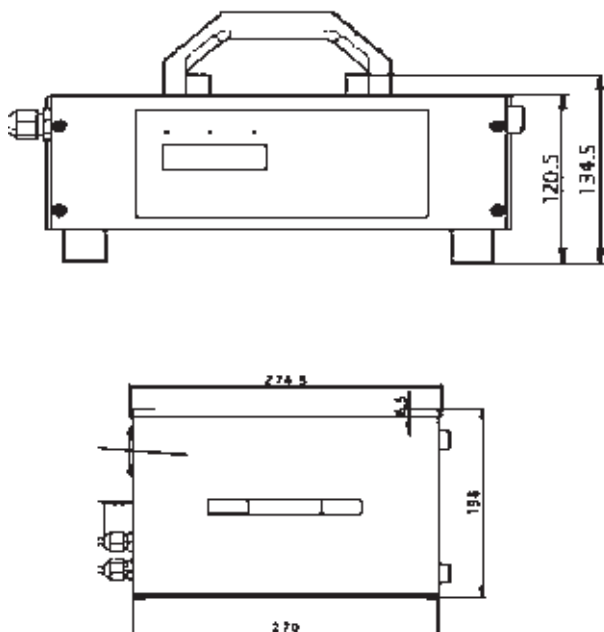
## CHARGER

### HF BASIC CHARGER

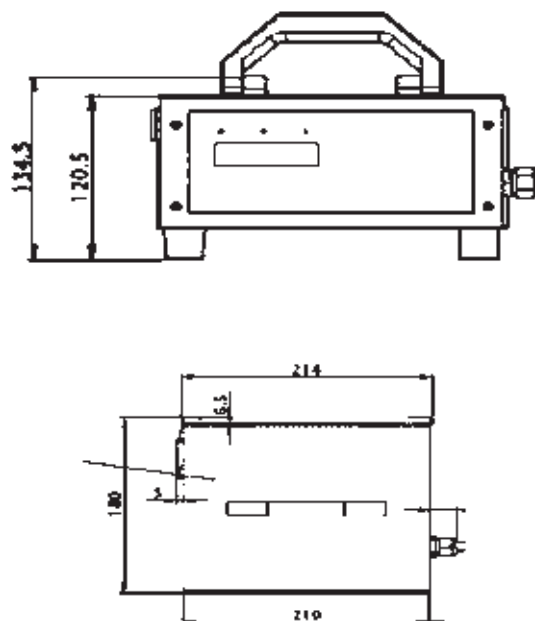
Art. No.	Model	Input voltage	VOLTAGE ( Volt )	CURRENT ( Ampere )	CASING Type	WEIGHT ( Kg )	IP Grade	WET Battery capacity (Ah) C5 8-9 hours charging time	WET-AGM Battery capacity (Ah) C5 10-12 hours charging time	GEL Battery capacity (Ah) C5 11-14 hours charging time
0436100100	HF Basic 12V 13A	110 - 240Vac S	12	13	A10	1,5	IP30		100 - 130 Ah	70 - 110
0436100200	HF Basic 24V 13A	110 - 240Vac S	24	13	A10	1,5	IP30		100 - 130 Ah	70 - 110
0436101100	HF Basic 12V 20A	110 - 240Vac S	12	20	A6	2,2	IP30	95 - 120 Ah	120 - 195 Ah	110 - 170
0436101300	HF Basic 12V 30A	110 - 240Vac S	12	30	A6	2,2	IP30	145 - 180 Ah	200 - 280 Ah	170 - 250
0436101500	HF Basic 24V 20A	110 - 240Vac S	24	20	A6	2,2	IP30	95 - 120 Ah	120 - 195 Ah	110 - 170
0436101700	HF Basic 24V 30A	110 - 240Vac S	24	30	A6	2,2	IP30	145 - 180 Ah	200 - 280 Ah	170 - 250
0436101900	HF Basic 36V 20A	110 - 240Vac S	36	20	A6	2,2	IP30	95 - 120 Ah	120 - 195 Ah	110 - 170
0436102000	HF Basic 36V 25A	110 - 240Vac S	36	25	A6	2,2	IP30	120 - 160 Ah	180 - 258 Ah	140 - 210
0436102200	HF Basic 48V 20A	110 - 240Vac S	48	20	A6	2,2	IP30	95 - 120 Ah	120 - 195 Ah	110 - 170

The stated charging times may fluctuate by +/- 0.5h. All charging times at an ambient temperature of 27°C.  
Changes to the technical specifications are possible without prior announcement.

#### A6 CASING



#### A10 CASING



#### Banner GmbH

Banner Straße 1 - 4021 Linz

Telefon: +43/(0)732/38 88-0 - Fax: +43/(0)732/38 88-21399

<http://www.bannerbatterien.com/banner/kontakt/formular/index211.php>

**Banner**  
THE POWER COMPANY